

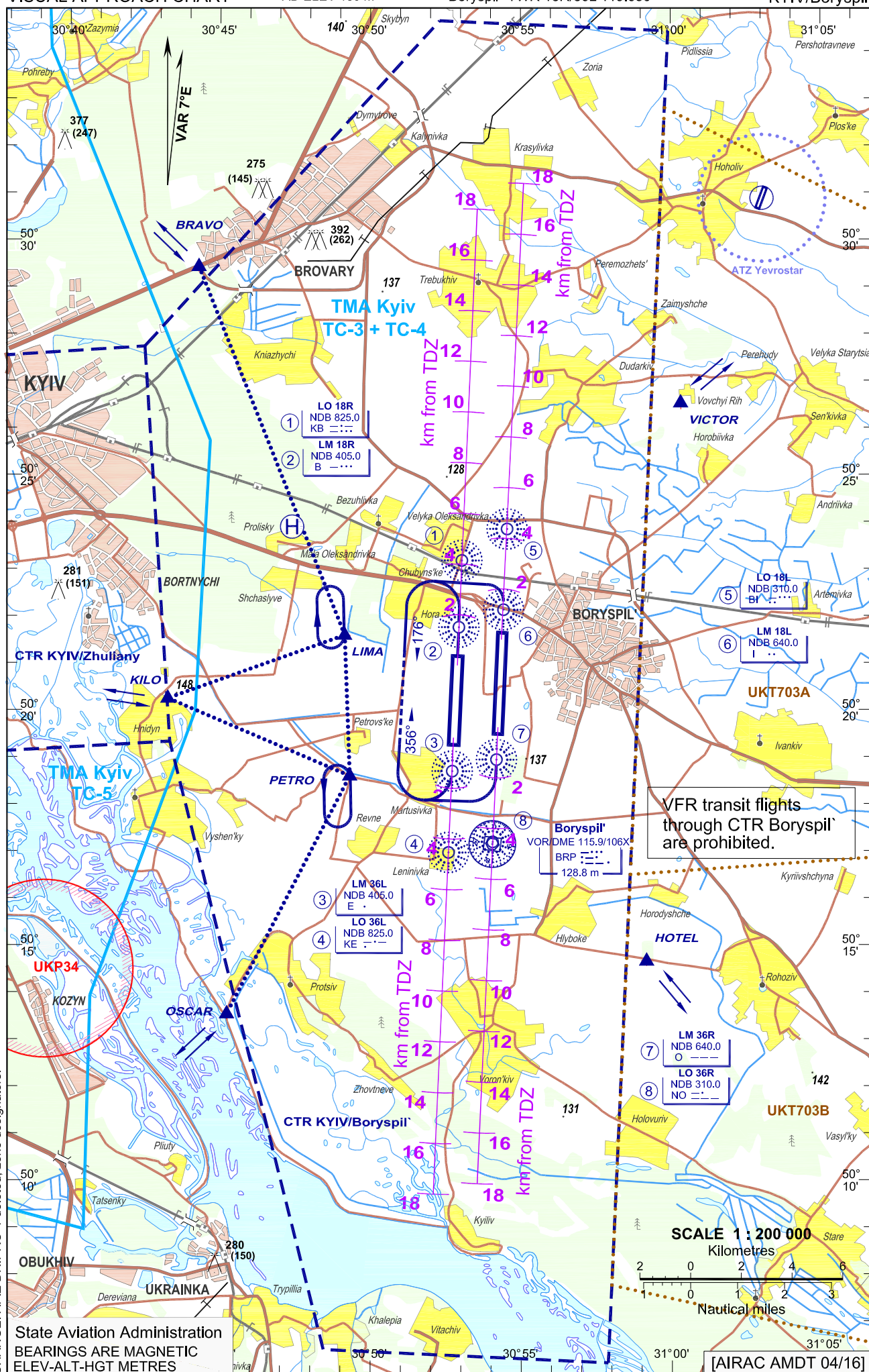
VISUAL APPROACH CHART

AD ELEV 130 m

Kyiv Information 118.500

Boryspil' TWR 18R/36L 119.650

KYIV/Boryspil'



CHANGE: AFIZ DNIPRO-1 deleted; zone designators.

State Aviation Administration
BEARINGS ARE MAGNETIC
ELEV-ALT-HGT METRES

[AIRAC AMDT 04/16]

Designation	Vertical limits and airspace Class	Call signs and frequencies (MHz)	Designation	Vertical limits and airspace Class
CTR KYIV/ Boryspil'	900/SFC Class D	Boryspil' TWR RWY 18R/36L 119.650	UK-P34	1000/SFC Unclassified
CTR KYIV/ Zhuliany	700/SFC Class D	Zhuliany TWR 120.700	UKT703A	450/SFC Unclassified
TMA Kyiv TC-3+TC-4	2900/450 Class C	Kyiv Radar 122.775 128.175	UKT703B	450/SFC Unclassified
TMA Kyiv TC-5	1650/400 Class C	Kyiv Radar 125.300		
ATZ Yevrostar	400/SFC Class G	-		

Prescribed VFR Routes

Waypoint name	Coordinates	Description	Remarks
BRAVO	502925N 0304417E	Intersection of Brovarskyi avenue, Kyivska street and motorway E95	-
HOTEL	501440N 0305910E	Road between Hlyboke and Rohoziv villages (forest plantation)	-
KILO	502015N 0304316E	Northeast of Hnidyn village (sand quarry)	For flights to/from UKKK only
LIMA	502135N 0304910E	Southwest of forest plantation (between Shchaslyve and Hora villages)	RH Holding
OSCAR	501332N 0304514E	Dam (levee) between Protsiv village and Dnipro river	-
PETRO	501835N 0304918E	Road intersection between Petrovs'ke, Revne and Martusivka villages	LH Holding
VICTOR	502630N 0310020E	Vovchyi Rih village (lake)	-
KB NDB	502311.0N 0305302.7E	-	-
B NDB	502145.6N 0305256.5E	-	-
KE NDB	501658.3N 0305235.7E	-	-
E NDB	501842.0N 0305243.2E	-	-
BI NDB	502350.8N 0305432.8E	-	-
I NDB	502208.0N 0305425.7E	-	-
NO NDB	501714.9N 0305403.8E	-	-
O NDB	501856.9N 0305411.2E	-	-
BRP VOR/DME	501708.5N 0305403.5E	-	-